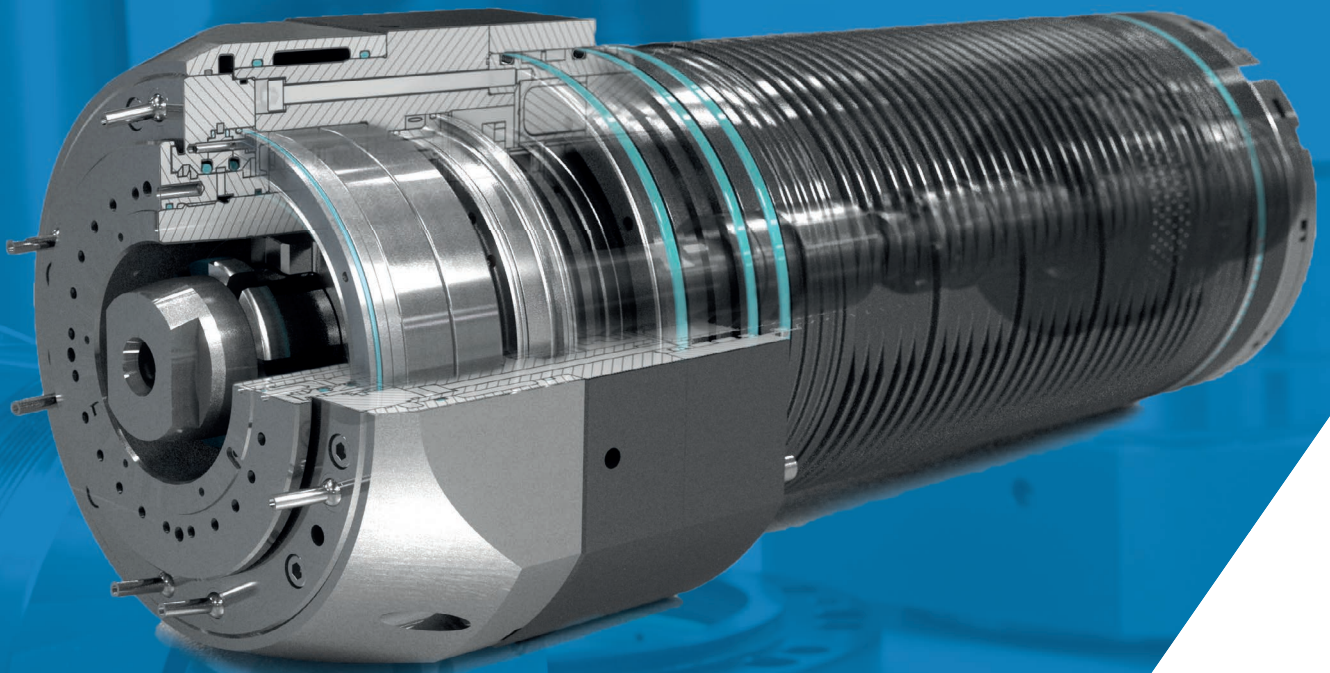


SPINDLE -REPAIR SERVICE



COMPONENTS
PERFECTION.



MADE IN GERMANY



A man with a beard is shown in profile, looking down at a mechanical part. The background is a blurred industrial setting. The text is overlaid on the top left of the image.

Reduction of downtimes: Maintenance is the best prevention.

CYTEC spindle repair service, a constantly high quality level in all overhaul phases

CYTEC offers comprehensive and professional full range service for your motor spindle, from maintenance and repair up to supply with any required and rapidly available spare parts.

In case of essential maintenance: We submit a maintenance and repair offer within a short time, so that downtimes are reduced to a minimum.

Repair is executed by experienced and high skilled technical experts using only original CYTEC spare parts, with complete cost listing.

Fast, standardised and audited ISO 9001 processes for immediate trouble-shooting/fault correction.

A close-up photograph of industrial machinery. A yellow robotic arm with a black adjustment knob is positioned over a complex metal assembly. A blue overlay bar is at the bottom of the image.

INSPECTION

PREVENTION


PREVENTION PLUS +

BEARING SERVICE



CYTEC-SERVICE

Detailed process and error analysis



Complete receiving and pre-delivery inspection according to highest quality standards


- The preventive product maintenance ensures long-term reliability and productivity of your spindle.
- Minimum maintenance costs during the whole service life of the spindle.
- Continuous exchange of all wear parts increases economic operation using exclusively original spare parts.



FAST LANE

Rapid repair service in emergency situations

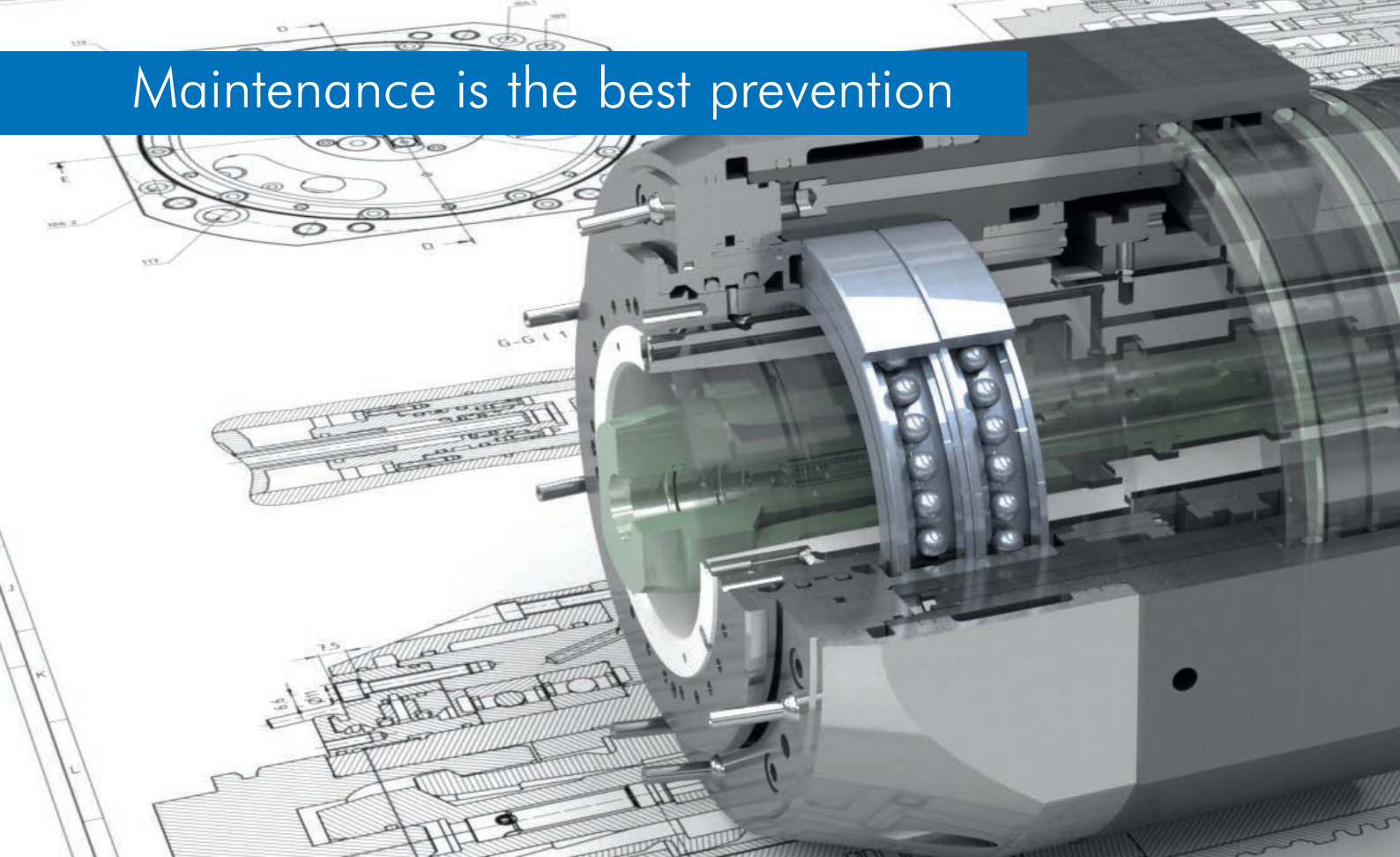
Downtimes are minimised, the urgent support by the CYTEC spindle specialists guarantees the right service at the right time with projectable costs.



Original spare parts - high availability
and fast delivery

Prompt supply with replacement parts, 98% in
house production

Maintenance is the best prevention



INSPECTION

- Leakage test
- Geometry inspection (concentric and planar run-out, cone)
- Examination of the clamping unit including control of clamping force
- Insulation measurement of the motors
- Analysis of the measuring system
- Measuring of vibration and thermal expansion

PREVENTION BASIC

- Exchange of functional essential components in the clamping unit (seals, locking slide and segments)
- Substitution of the rotary union with a refurbished one
- Optional on-site service
- 6 months warranty for exchanged parts

LEVEL 1 Inspection

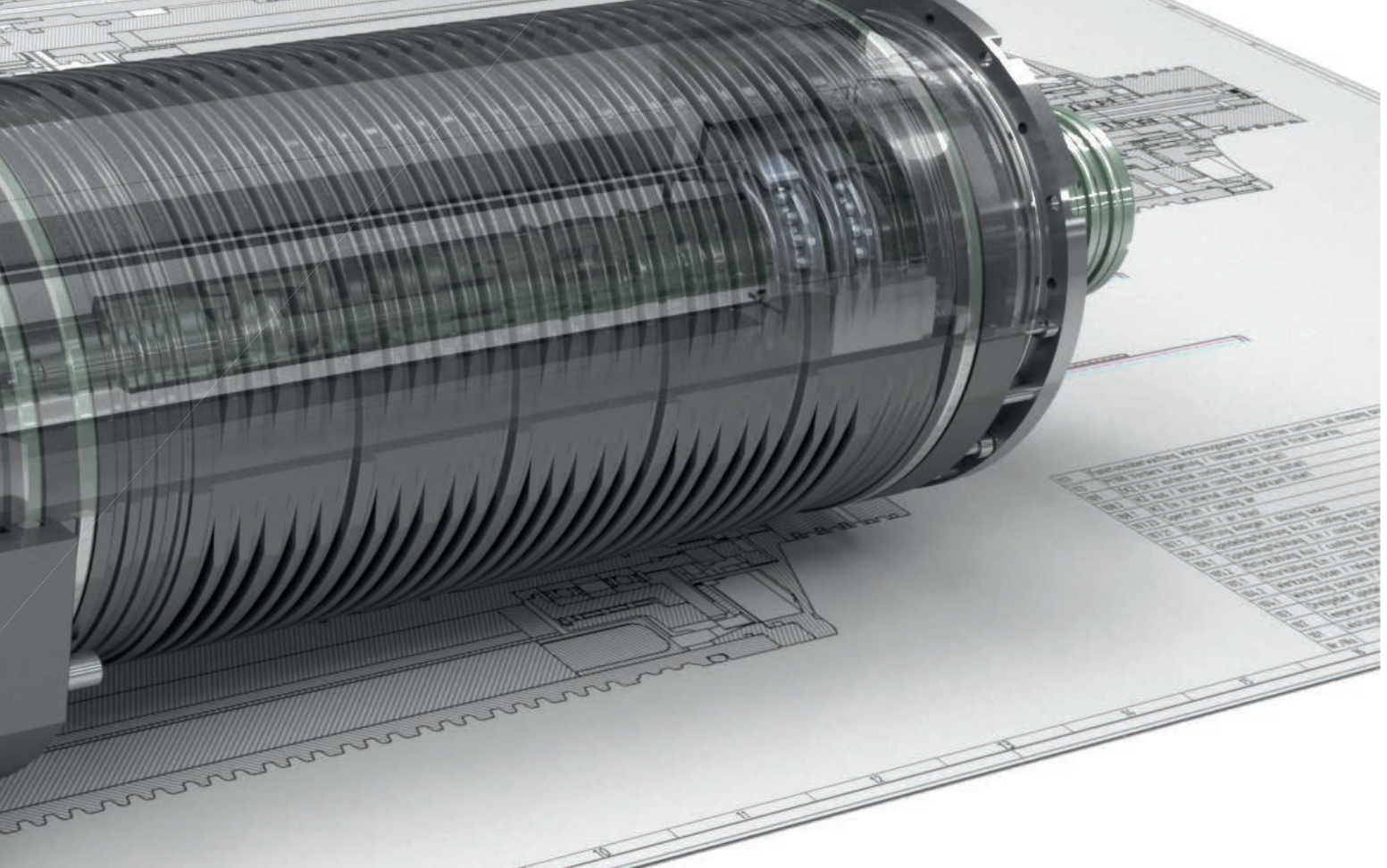
PREVENTION BASIC

LEVEL 2 Inspection

LEVEL 3 Inspection

PREVENTION BASIC

LEVEL 4 Inspection



PREVENTION PLUS +	BEARING SERVICE
<ul style="list-style-type: none"> - Exchange of the clamping kit - Exchange of the complete clamping unit - Exchange of the rotary union - Optional on-site service - 6 months warranty for exchanged parts 	<ul style="list-style-type: none"> - Exchange of bearings - Rework of bearing seat and cone - Exchange of rotary encoder and gear wheel - 6 months warranty for exchanged parts

--	--

PREVENTION PLUS +	
-------------------	--

	Bearing Service
--	-----------------

PREVENTION PLUS +	Bearing Service
-------------------	-----------------



CYTEC WORLD WIDE

● Sales & Services, Home Address and Subsidiaries:

Jülich, Germany | Pliezhausen, Germany | Oldham, Great Britain
Le Pecq, France | Leiria, Portugal | Milano, Italy | Liberec, Czech Republic
Schwarzenburg, Switzerland | Donaújváros, Hungary | Port Saint Lucie, USA
Anaheim, USA | Aragua, Venezuela | Indianópolis, Brazil
Shanghai, China | Taichung City, Taiwan



CYTEC Zylindertechnik GmbH

Steffensrott 1 • D-52428 Jülich

Tel.: (+49) 2461 / 6808-0 • Fax: (+49) 2461 / 6808-758

E-mail: info@CYTEC.de • [http:// www.CYTEC.de](http://www.CYTEC.de) • www.CYTEC.blog



Spindle repair flyer | 09/2021 | english

We reserve the right to make technical modifications. The components/ machines shown here may include options, accessories and control variants.