

CYMILL

NANO-SERIES



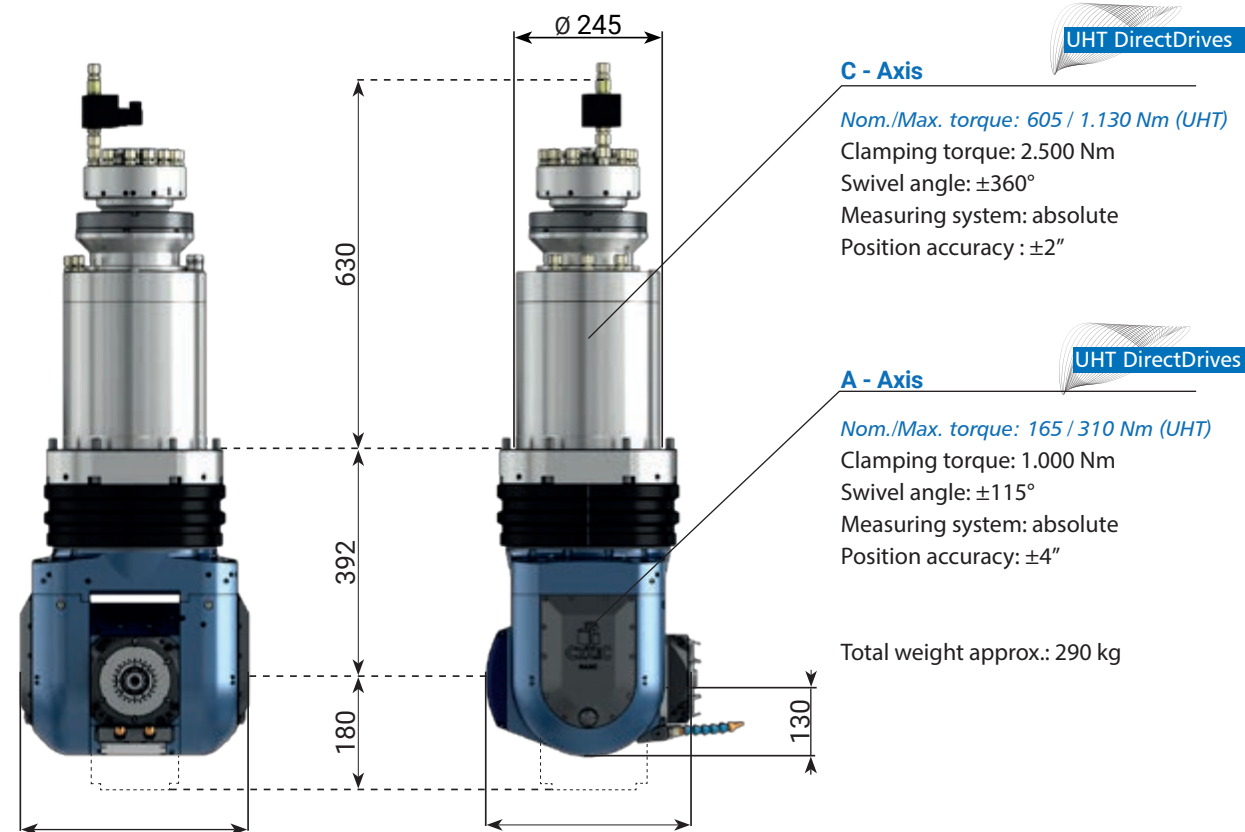
COMPONENTS
PERFECTION.



MADE IN GERMANY

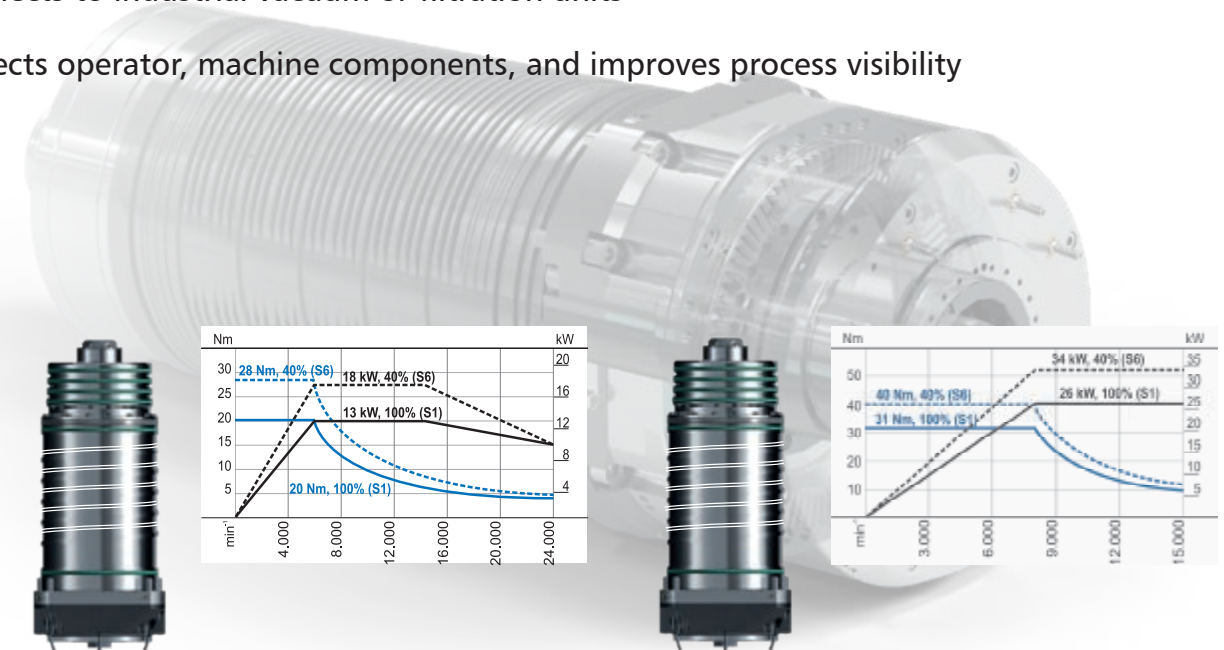


The CYTEC NANO-SERIES is a high-precision, compact 2-axis fork-type milling head, optimized for dynamic 5-axis simultaneous machining. It features direct drive technology in both A and C axes, offering excellent torque, precision, and responsiveness in a lightweight design.



AVAILABLE ACCESSORIES

- Integrated Dust & Chip Extraction System
Optional accessory mounted around the spindle nose or tool area
- Designed for clean machining of materials like carbon fiber, fiberglass, and wood
- Connects to industrial vacuum or filtration units
- Protects operator, machine components, and improves process visibility



Series:	CS-13-135-A	CS-26-135-S
Power S1/	13/18 kW	26/34 kW
Nom.	6.000 r.p.m.	8.000 r.p.m.
Torque S1/	20/28 Nm	31/40 Nm
Max.	24.000 r.p.m.	15.000 r.p.m.
Tool sys-	HSK-A63	HSK-A63



C - AXIS 360° / INFINIT



Exchange Interface



Delta Zero Temperature Control

CYSPEED *Select* motorspindles are the most frequent used motorspindles in the market. In due to the high demand, these motorspindles are produced to stock.



Rapid delivery time



Competitive pricing



Big Stock



40 Years of experience



Refurbished program



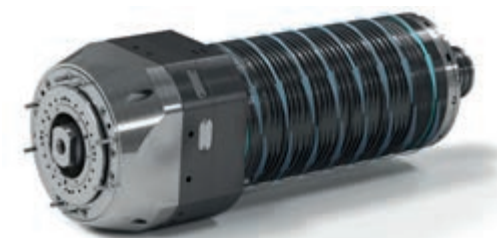
Global Sales & Service



36 months warranty

CYSPEED Advantages:

- + CYTEC hydromechanical tool clamping system for failsafe machining.
- + Hybrid bearing combination for highest performance, rigidity, accuracy and spindle lifetime.
- + Delta-Zero Temperature control for homogeneous temperature.
- + Most compact design.
- + Unique grasping safety of clamping system with 2.5mm stroke.





CYTEC WORLD WIDE

HQ - CYTEC Zylindertechnik Germany
Jülich

CYTEC France
Le Pecq

CYTEC USA
Florida

CYTEC Taiwan
Taichung

CYTEC China
Shanghai, Jinan

CYTEC UK
Oldham



WWW.CYTEC-SYSTEMS.COM

Contact:

CYTEC SYSTEMS

1490 NE Pine Island Rd, Unit 3C, Cape Coral,
Florida 33909, US
+1 (833) 298-3287
usmarket@cytec.de

